



TIMBER HOME LIVING.COM

SEARCH

Go



FloorPlans

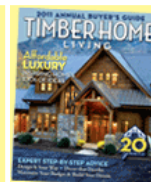


Site

Subscribe Now!

Get a
FREE
Trial Issue
and a
FREE GIFT

SUBSCRIBE



[Give a Gift](#) • [Customer Service](#)

[Timber Home Plans](#)

[Build My Home](#)

[Shop](#)

[Marketplace](#)

[From the Magazine](#)

[Events](#)

[Community](#)

[Timber Home Living](#) > [Information](#)

Floor Plan Fever

Floor Plan Fever

April 2009 | [Timber Home Living](#)

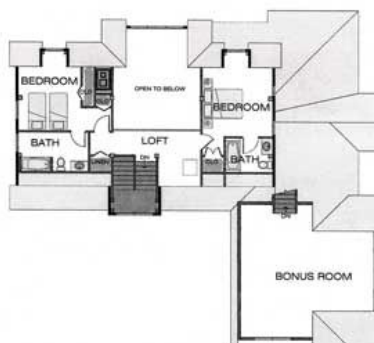
by: **Donna Peak**

The hottest concepts in timber home design

As the saying goes, everybody loves a winner, and in the April issue of Timber Home Living, we featured five timber home plans that won us over in our **Fourth Annual Timber Home Living Floor Plan Design Contest** ("Winners Circle" April 2009, page 32). But the field of competition was stiff, leaving our editorial staff to wonder how we could sleep at night knowing we had even more timber home plans worthy of recognition. Thus, we give you a dozen additional designs to mull over. Though they didn't edge out the top five, they're still exceptional in our book.



[First Floor](#)



[Second Floor](#)

Click on the images above to see larger versions of the floor plans.

Plan: Winhall #5969

Square footage: 2,772

Company: [Timberpeg](#)

603-298-8820, [timberpeg.com](#)



Basement



First Floor



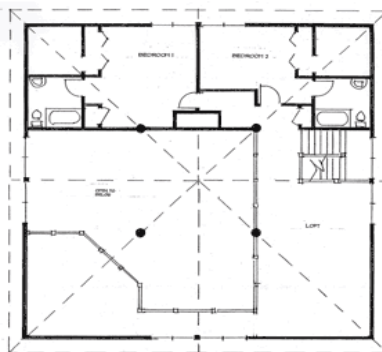
Second Floor

Click on the images above to see larger versions of the floor plans.

Plan: Custom Design
 Square footage: 2,900
 Company: Bonin Architects
 603-504-6009 boninarchitects.com



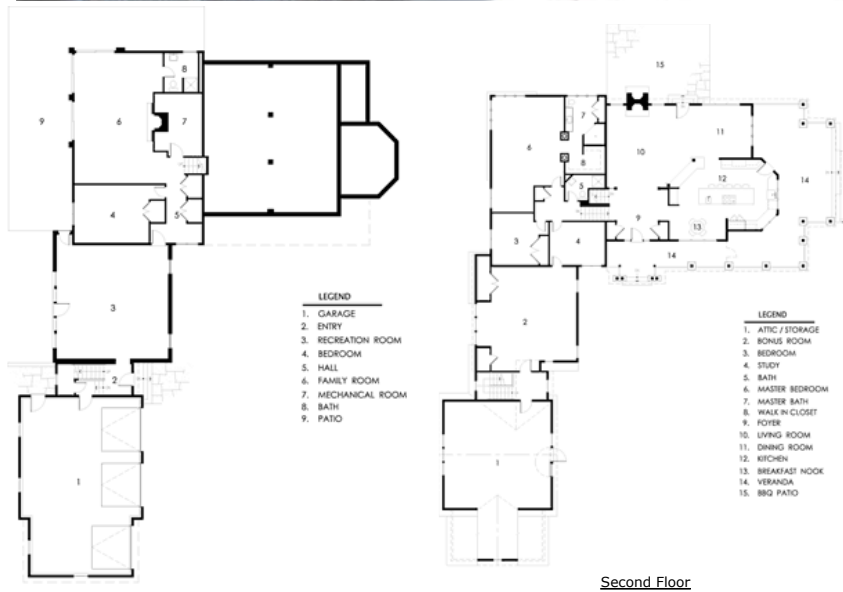
First Floor



Second Floor

Click on the images above to see larger versions of the floor plans.

Plan: Island Retreat
 Square footage: 3,044
 Company: Cascade Joinery
 360-527-0119 cascadejoinery.com



First Floor

Second Floor

Click on the images above to see larger versions of the floor plans.

Plan: Sabilla Residence
 Square footage: 6,765
 Company: LAN Associates
 845-615-0350

BasementFirst FloorSecond Floor

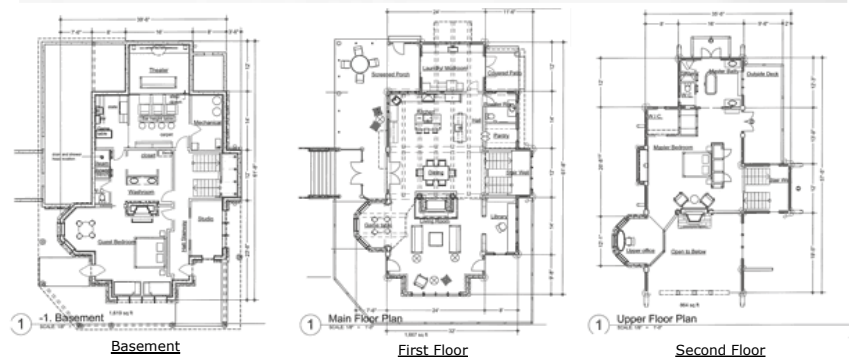
Click on the images above to see larger versions of the floor plans.

Plan: Tatanka

Square footage: 2,370 (not including garage or carport)

Company: Perfect Drafting & Design

(250) 395-3212 perfectdrafting.com

BasementFirst FloorSecond Floor

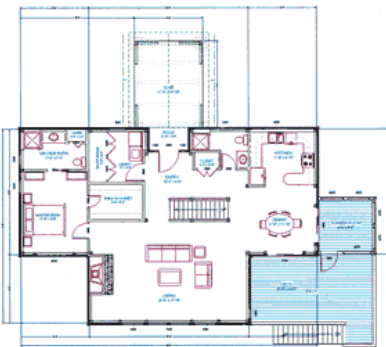
Click on the images above to see larger versions of the floor plans.

Plan: Argyle

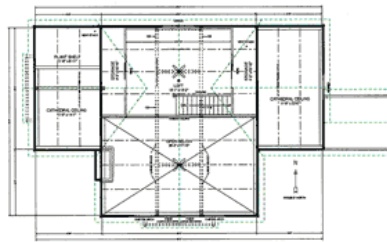
Square footage: 4,360 (including basement)

Company: Taron Design Inc.

360-312-4182 logdesign.com



First Floor



Second Floor

Click on the images above to see larger versions of the floor plans.

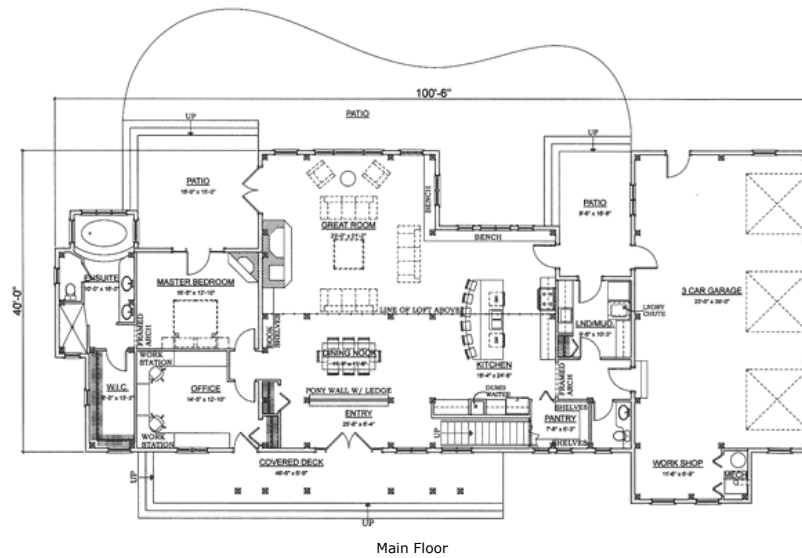
Plan: Ross Residence

Square footage: 1,784

Company: Timber Frames Inc.

585-374-6405 timberframesinc.com

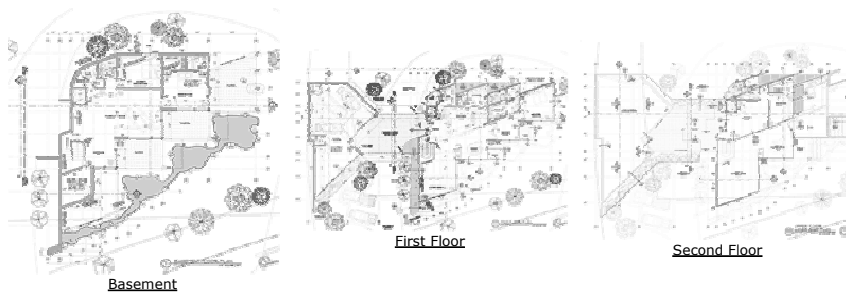


**Plan: Sun Valley**

Square footage: 4,448 (not including garage)

Company: Streamline Design Ltd.

604-854-2966 streamlinedesign.ca



Click on the images above to see larger versions of the floor plans.

Plan: Wong Residence

Square footage: 5,735 (including garage level)

Company: Ivy & Co. Architects

907-563-5656 ivyandco.com





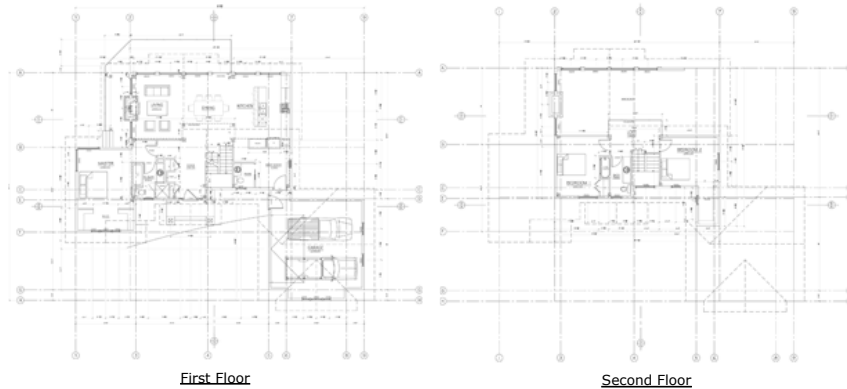
Click on the images above to see larger versions of the floor plans.

Plan: Pembroke Octagonal Tower

Square footage: 1,913

Company: Gillis & Company Timber Frames

902-453-2108 gillistimberframes.com



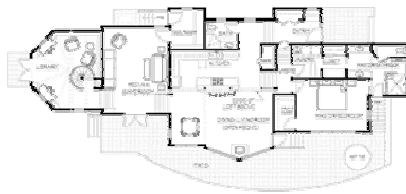
Click on the images above to see larger versions of the floor plans.

Plan: Sailer Haus

Square footage: 2,044

Company: Hüberthaus Timber Frames

250-344-8956 www.timberframecanada.com

[User Log-In](#)[Not Registered? Click here](#)First FloorSecond Floor

Click on the images above to see larger versions of the floor plans.

Plan: Discovery Bay Custom Home

Square footage: 2,785

Company: Richard Berg Architects

360-379-8090 richardbergarchitects.com

**SIGN UP FOR OUR
FREE NEWSLETTER**

Stay Connected:



Floor Plan Search [My Floor Plans](#) ?

search by floor plan or company name

Search

and/or search by sq. ft.

From No Min - sq ft. to No Max - sq ft.

and/or search by # of bedrooms

☐ 1 ☐ 2 ☐ 3 ☐ 4+

and/or search by # of bathrooms

☐ 1 ☐ 2 ☐ 3 ☐ 4+

Search

ADVERTISEMENT
ADVERTISEMENT

TimberGuides

20+ Years of Design & Build Homes for
the Pacific Northwest